

30-2199: Anti-CD27 Monoclonal Antibody (Clone:LT27)-PE Conjugated

Clonality :	Monoclonal
Clone Name :	LT27
Application :	FACS
Reactivity :	Human
Conjugate :	PE
Gene :	CD27
Gene ID :	939
Uniprot ID :	P26842
Alternative Name :	CD27,TNFRSF7
Isotype :	Mouse IgG2a
Immunogen Information :	Human peripheral blood lymphocytes

Description

CD27 is a transmembrane 55 kDa protein of the nerve growth factor-receptor family, expressed as a disulfide-linked homodimer on mature thymocytes, peripheral blood T cells and a subpopulation of B cells. Activation of T cells via TCR-CD3 complex results in upregulation of CD27 expression on the plasma membrane as well as in the release of its soluble 28-32 kDa form, sCD27, detected in the plasma, urine or spinal fluid. This sCD27 is an important prognostic marker of acute and chronic B cell malignancies. RgpA, a cysteine proteinase, although activating T cells through the protease-activated receptors (PARs), degrades CD27 and counteracts T cell activation mediated by CD27 and its ligand CD70.

Product Info

Amount :	100 tests
Storage condition :	Store in the dark at 2-8°C. Do not freeze. Avoid prolonged exposure to light.

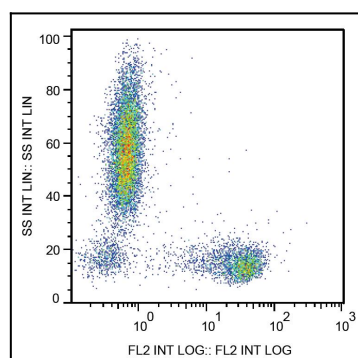


Figure 1: Surface staining of human peripheral blood cells with anti-human CD27 (LT27) PE.