

30-2145: Anti-CD279 / PD-1 Monoclonal Antibody (Clone:EH12.2H7)-PE Conjugated

Clonality :	Monoclonal
Clone Name :	EH12.2H7
Application :	FACS
Reactivity :	Human
Conjugate :	PE
Gene :	PDCD1
Gene ID :	5133
Uniprot ID :	Q15116
Alternative Name :	PDCD1,PD1
Isotype :	Mouse IgG1

Description

CD279 / PD-1 (programmed cell death 1), a transmembrane protein of CD28/CTLA-4 family. It is expressed inducibly mainly on activated T, B, and myeloid cells and plays a role in maintaining peripheral self-tolerance. Binding to its receptors CD273 and CD274 is associated with inhibition of T cell proliferation and induction of their anergy. It is also expressed during thymic development. Some variants of CD279 are associated with susceptibility to systemic lupus erythematosus, type 1 diabetes, and rheumatoid arthritis.

Product Info

Amount :	100 tests
Storage condition :	Store in the dark at 2-8°C. Do not freeze. Avoid prolonged exposure to light.

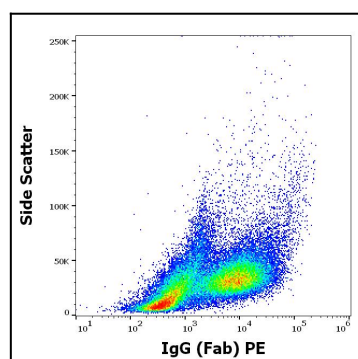


Figure 1: Flow cytometry surface staining pattern of human PHA stimulated peripheral whole blood stained using anti-human CD279 (EH12.2H7) PE antibody (10 µl reagent / 100 µl of peripheral whole blood).

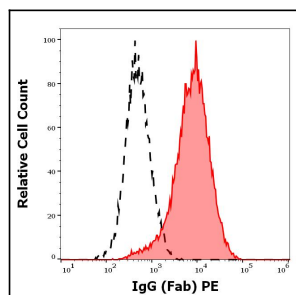


Figure 2: Separation of human CD45 positive lymphocytes (red-filled) from CD45 negative blood debris (black-dashed) in flow cytometry analysis (surface staining) of human PHA stimulated peripheral whole blood stained using anti-human CD279 (EH12.2H7) PE antibody (10 µl reagent / 100 µl of peripheral whole blood).