

30-1352: Anti-CD300a Monoclonal Antibody (Clone:MEM-260)

Clonality :	Monoclonal
Clone Name :	MEM-260
Application :	FACS
Reactivity :	Human
Gene :	CD300A
Gene ID :	11314
Uniprot ID :	Q9UGN4
Format :	Purified
Alternative Name :	CD300A,CMRF35H,IGSF12,HSPC083
Isotype :	Mouse IgG1
Immunogen Information :	HPB human acute lymphoid leukemia cell line

Description

CD300a (CMRF-35H, IRp60) is a non-MHC-specific inhibitory receptor of immunoglobulin superfamily, which contains three immunoreceptor tyrosine-based inhibitory motifs (ITIMs) that associate with SH2-containing phosphatases SHP-1 and SHP-2. CD300a is expressed on many cell types including T cells, NK cells, neutrophils, eosinophils or mast cells. Its triggering inhibits activating signals such as those of IL5, GM-CSF or eotaxin, as well as suppresses mast cell degranulation or NK cell cytotoxic activity.

Product Info

Amount :	0.1 mg
Purification :	Purified by protein-A affinity chromatography
Storage condition :	Store at 2-8°C. Do not freeze.

Application Note

Flow Cytometry *Recommended dilution:* 2 Åµg/ml

Western Blotting *Positive material:* HPB cell line

Negative material: JURKAT human cell line, RAJI human cell line

Sample preparation: Resuspend approx. 50 mil. cells in 1 ml cold Lysis buffer (1% laurylmaltoside in 20 mM Tris/Cl, 100 mM NaCl pH 8.2, 50 mM NaF including Protease inhibitor Cocktail). Incubate 60 min on ice. Centrifuge to remove cell debris. Mix lysate with non-reducing SDS-PAGE sample buffer.

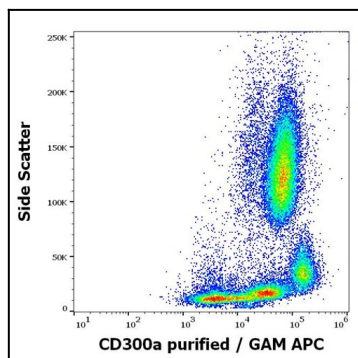


Figure 1: Flow cytometry surface staining pattern of human peripheral whole blood stained using anti-human CD300a (MEM-260) purified antibody (concentration in sample 4 µg/ml) GAM APC.

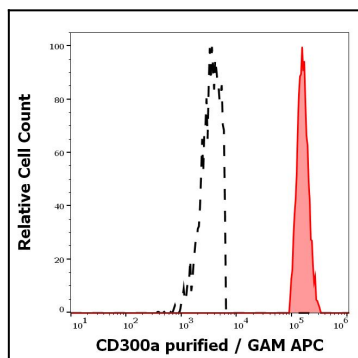


Figure 2: Separation of human monocytes (red-filled) from CD300a negative lymphocytes (black-dashed) in flow cytometry analysis (surface staining) of human peripheral whole blood stained using anti-human CD300a (MEM-260) purified antibody (concentration in sample 4 µg/ml) GAM APC.