

### 30-2246: Anti-CD300a Monoclonal Antibody (Clone:MEM-260)-PE Conjugated

<b>Clonality :</b>	Monoclonal
<b>Clone Name :</b>	MEM-260
<b>Application :</b>	FACS, WB
<b>Reactivity :</b>	Human
<b>Conjugate :</b>	PE
<b>Gene :</b>	CD300A
<b>Gene ID :</b>	11314
<b>Uniprot ID :</b>	Q9UGN4
<b>Alternative Name :</b>	CD300A,CMRF35H,IGSF12,HSPC083
<b>Isotype :</b>	Mouse IgG1
<b>Immunogen Information :</b>	HPB human acute lymphoid leukemia cell line

#### Description

CD300a (CMRF-35H, IRp60) is a non-MHC-specific inhibitory receptor of immunoglobulin superfamily, which contains three immunoreceptor tyrosine-based inhibitory motifs (ITIMs) that associate with SH2-containing phosphatases SHP-1 and SHP-2. CD300a is expressed on many cell types including T cells, NK cells, neutrophils, eosinophils or mast cells. Its triggering inhibits activating signals such as those of IL5, GM-CSF or eotaxin, as well as suppresses mast cell degranulation or NK cell cytotoxic activity.

#### Product Info

<b>Amount :</b>	100 tests
<b>Storage condition :</b>	Store in the dark at 2-8°C. Do not freeze. Avoid prolonged exposure to light.

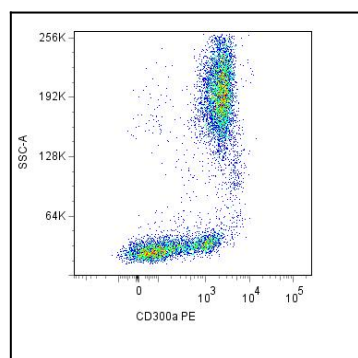


Figure 1: Surface staining of human peripheral blood cells with anti-CD300a (MEM-260) PE.