

### 30-2271: Anti-CD326 / EpCAM Monoclonal Antibody (Clone:VU-1D9)-PE Conjugated

|                                |   |
|--------------------------------|---|
| <b>Clonality :</b>             | Monoclonal                                  |
| <b>Clone Name :</b>            | VU-1D9                                      |
| <b>Application :</b>           | FACS, IHC, IP, WB, IHC-Fr, ICC              |
| <b>Reactivity :</b>            | Human                                       |
| <b>Conjugate :</b>             | PE  |
| <b>Gene :</b>                  | EPCAM                                       |
| <b>Gene ID :</b>               | 4072  |
| <b>Uniprot ID :</b>            | P16422                                      |
| <b>Alternative Name :</b>      | EPCAM,GA733-2,M1S2,M4S1,MIC18,TACSTD1,TROP1 |
| <b>Isotype :</b>               | Mouse IgG1                                  |
| <b>Immunogen Information :</b> | Small cell lung carcinoma cell line H69.    |

#### Description

CD326 / EpCAM (also known as ESA, EGP40, EGP-2, KSA1/4, CO17-1A, GA733-2, MOC31, Ber-EP4) is a 40 kDa transmembrane glycoprotein serving as adhesion molecule in the basolateral membranes in a variety of epithelial cells. CD326 mediates calcium-independent homotypic cell-cell adhesions. CD326 over-expression has been detected in many epithelial tumours and is often associated with bad prognosis. It has been used for diagnostics of (pre-) malignancies at early stages.

#### Product Info

|                            |   |
|----------------------------|---|
| <b>Amount :</b>            | 100 tests   |
| <b>Storage condition :</b> | Store in the dark at 2-8°C. Do not freeze. Avoid prolonged exposure to light. |

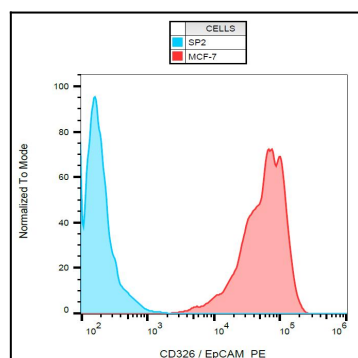


Figure 1: Surface staining of human MCF-7 cell line with anti-human CD326 / EpCAM (VU-1D9) PE.