

30-1788: Anti-CD33 Monoclonal Antibody (Clone:WM53)-APC Conjugated

Clonality :	Monoclonal
Clone Name :	WM53
Application :	FACS, IP, WB, IHC-Fr, ICC, Functional Assay
Reactivity :	Human, Non-Human Primates
Conjugate :	APC
Gene :	CD33
Gene ID :	945
Uniprot ID :	P20138
Alternative Name :	CD33,SIGLEC3
Isotype :	Mouse IgG1
Immunogen Information :	Human AML cells

Description

CD33 is a transmembrane protein of the sialic acid-binding immunoglobulin-like lectin (Siglec) family. It belongs to the immunoreceptor tyrosine-based inhibitory motif (ITIM)-containing molecules able of recruiting protein tyrosine phosphatases SHP-1 and SHP-2 to signal assemblies; these ITIMs are also used for ubiquitin-mediated removal of the receptor from the cell surface. CD33 is expressed on cells of myelomonocytic lineage, binds sialic acid residues in N- and O-glycans on cell surfaces, and is a therapeutic target for acute myeloid leukemia.

Product Info

Amount :	100 tests
Storage condition :	Store in the dark at 2-8°C. Do not freeze. Avoid prolonged exposure to light.

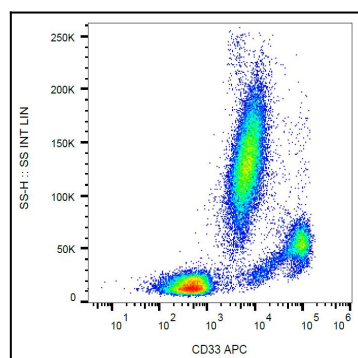


Figure 1: Surface staining of human peripheral blood with anti-CD33 (WM53) APC.