

30-1780: Anti-CD36 Monoclonal Antibody (Clone:CB38 (NL07))-APC Conjugated

Clonality :	Monoclonal
Clone Name :	CB38 (NL07)
Application :	FACS
Reactivity :	Human
Conjugate :	APC
Gene :	CD36
Gene ID :	948
Uniprot ID :	P16671
Alternative Name :	Platelet glycoprotein 4, Glycoprotein IIIb, Leukocyte differentiation antigen CD36, PAS IV, Platelet collagen receptor, Platelet glycoprotein , Thrombospondin receptorIV
Isotype :	Mouse IgM
Immunogen Information :	living human myeloid cells

Description

CD36 (fatty acid translocase, FAT) is an 85-113 kDa ditopic glycosylated protein that belongs to the class B family of scavenger receptors. CD36 is expressed by most resting marginal zone B cells but not by follicular and B1 B cells, and it is rapidly induced on Follicular B cells in vitro upon TLR and CD40 stimulation. CD36 does not affect the development of B cells, but modulates both primary and secondary antibody response. Similarly to glucose transporter GLUT4, CD36 is translocated from intracellular pools to the plasma membrane following cell stimulation by insulin. In mouse, CD36 is responsible for gustatory perception of long-chain fatty acids.

Product Info

Amount :	100 tests
Storage condition :	Store in the dark at 2-8°C. Do not freeze. Avoid prolonged exposure to light.

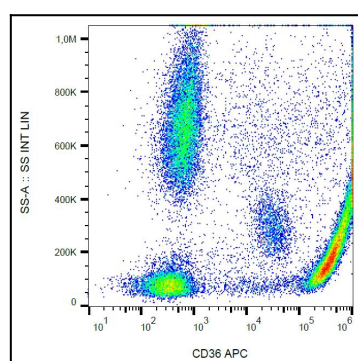


Figure 1: Surface staining of CD36 in human peripheral blood with anti-CD36 (CB38) APC.