

### 30-2091: Anti-CD4 Monoclonal Antibody (Clone:OX-35)-FITC Conjugated

<b>Clonality :</b>	Monoclonal
<b>Clone Name :</b>	OX-35
<b>Application :</b>	FACS
<b>Reactivity :</b>	Rat
<b>Conjugate :</b>	FITC
<b>Gene :</b>	Cd4
<b>Gene ID :</b>	24932
<b>Uniprot ID :</b>	P05540
<b>Alternative Name :</b>	Cd4
<b>Isotype :</b>	Mouse IgG2a
<b>Immunogen Information :</b>	MLR generated rat Th cells

#### Description

CD4 is a single chain transmembrane glycoprotein of immunoglobulin supergene family. In its extracellular region there are 4 immunoglobulin-like domains (1 Ig-like V-type and 3 Ig-like C2-type). The intracellular region of CD4 associates with p56Lck, a Src-like protein tyrosine kinase. It was described that CD4 segregates into specific detergent-resistant T-cell membrane microdomains. CD4 binds to MHC class II molecules (by CDR2-like region in CD4 domain 1), HIV envelope protein gp120 (by CDR2-like region in CD4 domain 1) and other ligands, such as IL-16 (by to CD4 domain 3) or L-selectin. CD4 is a co-receptor involved in immune response (co-receptor activity in binding to MHC class II molecules) and HIV infection. CD4 regulates T-cell activation, T/B-cell adhesion, T-cell differentiation, T-cell selection and signal transduction. Defects in antigen presentation (MHC class II) cause dysfunction of CD4+ T-cells and their almost complete absence in patients blood, tissue and organs (SCID immunodeficiency).

#### Product Info

<b>Amount :</b>	0.1 mg
<b>Storage condition :</b>	Store in the dark at 2-8°C. Do not freeze. Avoid prolonged exposure to light.

#### Application Note

Flow cytometry: Recommended dilution: 1-4 µg/ml.

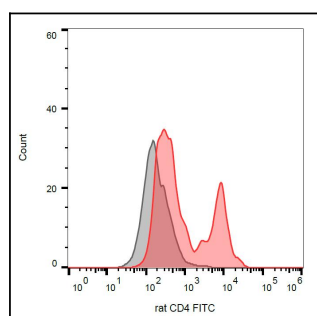


Figure 1: Surface staining of rat thymocytes with anti-rat CD4 (OX-35) FITC.