

30-2002: Anti-CD40 Monoclonal Antibody (Clone:HI40a)-FITC Conjugated

Clonality :	Monoclonal
Clone Name :	HI40a
Application :	FACS
Reactivity :	Human
Conjugate :	FITC
Gene :	CD40
Gene ID :	959
Uniprot ID :	P25942
Alternative Name :	B-cell surface antigen CD40, Bp50, CD40L receptor, CDw40
Isotype :	Mouse IgG1
Immunogen Information :	Human CD40a

Description

CD40 is a costimulatory molecule of the TNF receptor superfamily and is expressed on many cell types, such as B cells, monocytes/macrophages, dendritic cells, endothelial cells, fibroblasts or vascular smooth muscle cells. Interaction of CD40 and its ligand CD154 (CD40L) is required for the generation of antibody responses to T-dependent antigens as well as for the development of germinal centers and memory B cells. In monocytes/macrophages CD40 engagement induces production of pro-inflammatory cytokines and chemokines. CD40-CD154 interactions are also critical for development of CD4 T cell-dependent effector functions. CD40 links innate and adaptive immune responses to bacterial stimuli and serves as an important regulator affecting functions of other costimulatory molecules.

Product Info

Amount :	100 tests
Storage condition :	Store in the dark at 2-8°C. Do not freeze. Avoid prolonged exposure to light.

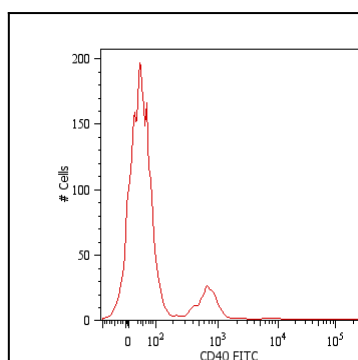


Figure 1: Surface staining of human peripheral blood cells with anti-human CD40 (HI40a) FITC. Cells in the lymphocyte gate were used for analysis.