

### 30-2200: Anti-CD41 / Platelet GPIIb Monoclonal Antibody (Clone:MEM-06)-PE Conjugated

<b>Clonality :</b>	Monoclonal
<b>Clone Name :</b>	MEM-06
<b>Application :</b>	FACS
<b>Reactivity :</b>	Human
<b>Conjugate :</b>	PE
<b>Gene :</b>	ITGA2B
<b>Gene ID :</b>	3674
<b>Uniprot ID :</b>	P08514
<b>Alternative Name :</b>	ITGA2B,GP2B,ITGAB
<b>Isotype :</b>	Mouse IgG1
<b>Immunogen Information :</b>	Leukocytes of patient suffering from LGL-type leukaemia.

#### Description

CD41 (platelet glycoprotein IIb) is composed of two subunits (120 kDa  $\alpha$ , alpha and 23 kDa  $\beta$ , beta) that interact with CD61 in the presence of calcium to form a functional adhesive protein receptor. Upon blood vessel damage, this receptor binds to a variety of proteins including von Willebrand factor, fibrinogen, fibronectin and vitronectin. CD41 is mainly expressed on megakaryocyte-platelet lineage, but generally belongs to the antigens that are expressed during early stages of hematopoietic differentiation.

#### Product Info

<b>Amount :</b>	100 tests
<b>Storage condition :</b>	Store in the dark at 2-8°C. Do not freeze. Avoid prolonged exposure to light.

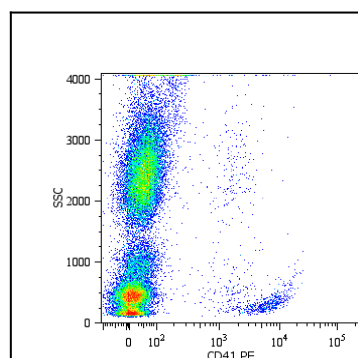


Figure 1: Surface staining of human platelets with anti-human CD41 (MEM-06) PE.