

30-1723: Anti-CD42b / GPIb alpha Monoclonal Antibody (Clone:HIP1)-APC Conjugated(Discontinued)

| | |
|--------------------------------|---|
| Clonality : | Monoclonal |
| Clone Name : | HIP1 |
| Application : | FACS, IHC-Fr, Functional Assay |
| Reactivity : | Human, Non-Human Primates |
| Conjugate : | APC |
| Gene : | GP1BA |
| Gene ID : | 2811 |
| Uniprot ID : | P07359 |
| Alternative Name : | GP1BA |
| Isotype : | Mouse IgG1 |
| Immunogen Information : | Peripheral blood mononuclear cells of a patient suffering with CLL. |

Description

CD42b (GPIb alpha) composes together with GPIb beta, GPIX and GPV the GPIb-IX-V receptor complex critical in the process of platelet-rich thrombus formation by tethering the platelet to a thrombogenic surface. CD42b binds to von Willebrand factor (VWF) exposed at a site of vascular injury, as well as to thrombin, coagulation factors XI and XII, high molecular weight kininogen, TSP-1, integrin Mac-1 and P-selectin. The extracellular domain of CD42b by its interactions also contributes to metastasis.

Product Info

| | |
|----------------------------|---|
| Amount : | 100 tests |
| Storage condition : | Store in the dark at 2-8°C. Do not freeze. Avoid prolonged exposure to light. |

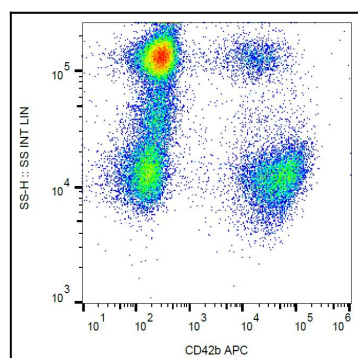


Figure 1: Surface staining of human peripheral blood with anti-CD42b (HIP1) APC.