

### 30-2219: Anti-CD42b / GPIb alpha Monoclonal Antibody (Clone:HIP1)-PE Conjugated(Discontinued)

<b>Clonality :</b>	Monoclonal
<b>Clone Name :</b>	HIP1
<b>Application :</b>	FACS, IHC-Fr, Functional Assay
<b>Reactivity :</b>	Human, Non-Human Primates
<b>Conjugate :</b>	PE
<b>Gene :</b>	GP1BA
<b>Gene ID :</b>	2811
<b>Uniprot ID :</b>	P07359
<b>Alternative Name :</b>	GP1BA
<b>Isotype :</b>	Mouse IgG1
<b>Immunogen Information :</b>	Peripheral blood mononuclear cells of a patient suffering with CLL.

#### Description

CD42b (GPIb alpha) composes together with GPIb beta, GPIX and GPV the GPIb-IX-V receptor complex critical in the process of platelet-rich thrombus formation by tethering the platelet to a thrombogenic surface. CD42b binds to von Willebrand factor (VWF) exposed at a site of vascular injury, as well as to thrombin, coagulation factors XI and XII, high molecular weight kininogen, TSP-1, integrin Mac-1 and P-selectin. The extracellular domain of CD42b by its interactions also contributes to metastasis.

#### Product Info

<b>Amount :</b>	100 tests
<b>Storage condition :</b>	Store in the dark at 2-8°C. Do not freeze. Avoid prolonged exposure to light.

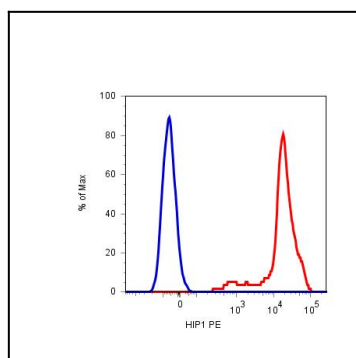


Figure 1: Surface staining of human platelets with anti-CD42b (HIP1) PE.