

### 30-1987: Anti-CD44 / Pgp-1 Monoclonal Antibody (Clone:MEM-263)-FITC Conjugated

<b>Clonality :</b>	Monoclonal
<b>Clone Name :</b>	MEM-263
<b>Application :</b>	FACS, IP, WB, IHC
<b>Reactivity :</b>	Human, Pig, Dog
<b>Conjugate :</b>	FITC
<b>Gene :</b>	CD44
<b>Gene ID :</b>	960
<b>Uniprot ID :</b>	P16070
<b>Alternative Name :</b>	CD44,LHR,MDU2,MDU3,MIC4
<b>Isotype :</b>	Mouse IgG1
<b>Immunogen Information :</b>	COS-7 cells (African Green Monkey).

#### Description

CD44 is a transmembrane glycoprotein expressed on the surface of most cells, which serves as a receptor for hyaluronan. CD44 mediates angiogenesis, cell adhesion, proliferation and migration, it is thus important for lymphocyte activation, recirculation and homing, it can thus serve e.g. as a modulator of macrophage recruitment in response to pathogen. Although CD44 functions are essential for physiological activities of normal cells, elevated CD44 expression correlates with poor prognosis in many carcinomas, facilitating tumour growth and metastasis, antiapoptosis and directional motility of cancer cells.

#### Product Info

<b>Amount :</b>	100 tests
<b>Storage condition :</b>	Store in the dark at 2-8°C. Do not freeze. Avoid prolonged exposure to light.

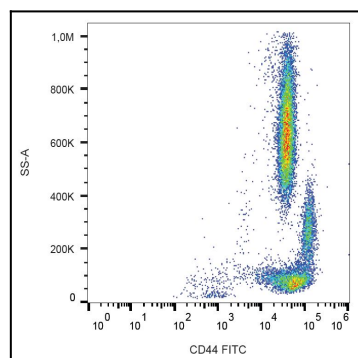


Figure 1: Surface staining of human peripheral blood using anti-CD44 (MEM-263) FITC conjugate.