

30-1127: Anti-CD45 / LCA Monoclonal Antibody (Clone:MEM-28)

Clonality :	Monoclonal
Clone Name :	MEM-28
Application :	FACS
Reactivity :	Human
Gene :	PTPRC
Gene ID :	5788
Uniprot ID :	P08575
Format :	Purified
Alternative Name :	PTPRC,CD45
Isotype :	Mouse IgG1
Immunogen Information :	Human thymocytes and T lymphocytes.

Description

CD45 (LCA, leukocyte common antigen) is a receptor-type protein tyrosine phosphatase ubiquitously expressed in all nucleated hematopoietic cells, comprising approximately 10% of all surface proteins in lymphocytes. CD45 glycoprotein is crucial in lymphocyte development and antigen signaling, serving as an important regulator of Src-family kinases. CD45 protein exists as multiple isoforms as a result of alternative splicing; these isoforms differ in their extracellular domains, whereas they share identical transmembrane and cytoplasmic domains. These isoforms differ in their ability to translocate into the glycosphingolipid-enriched membrane domains and their expression depends on cell type and physiological state of the cell. Besides the role in immunoreceptor signaling, CD45 is important in promoting cell survival by modulating integrin-mediated signal transduction pathway and is also involved in DNA fragmentation during apoptosis.

Product Info

Amount :	0.1 mg
Purification :	Purified by protein-A affinity chromatography
Storage condition :	Store at 2-8°C. Do not freeze.

Application Note

Immunocytochemistry *Recommended dilution:* 10 µg/ml

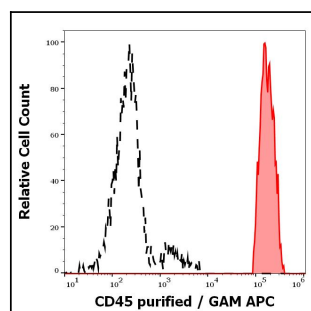


Figure 1: Separation of human lymphocytes (red-filled) from CD45 negative blood debris (black-dashed) in flow cytometry analysis (surface staining) of human peripheral whole blood stained using anti-human CD45 (MEM-28) purified antibody (concentration in sample 2 µg/ml) GAM APC.

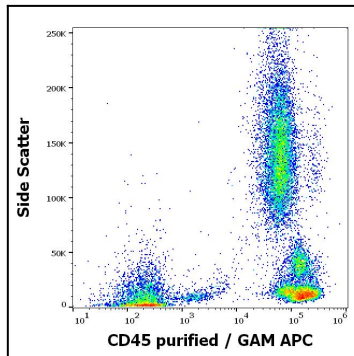


Figure 2: Flow cytometry surface staining pattern of human peripheral whole blood stained using anti-human CD45 (MEM-28) purified antibody (concentration in sample 2 µg/ml) GAM APC.