

30-1131: Anti-CD48 / BLAST-1 Monoclonal Antibody (Clone:MEM-102)

Clonality :	Monoclonal
Clone Name :	MEM-102
Application :	FACS
Reactivity :	Human
Gene :	CD48
Gene ID :	962
Uniprot ID :	P09326
Format :	Purified
Alternative Name :	CD48,BCM1,BLAST1
Isotype :	Mouse IgG1
Immunogen Information :	Raji human Burkitt's lymphoma cell line

Description

CD48 (Blast-1) belongs to the CD2 subset of the Ig superfamily, which includes CD2, CD2F-10, CD58, CD84, CD150, CD229, CD244 and others. These molecules bind to the same or another members of their family, thus mediate homotypic or heterotypic adhesion. CD48 is a GPI-anchored protein broadly expressed on hematopoietic cells and serves as a high affinity ligand for 2B4 and low affinity ligand for CD2. 2B4-CD48 interaction among NK cells and NK-T cells regulates cell proliferation. Signaling through CD48 results in eosinophil activation and CD48 expression is increased in several infectious diseases.

Product Info

Amount :	0.1 mg
Purification :	Purified by protein-A affinity chromatography
Storage condition :	Store at 2-8°C. Do not freeze.

Application Note

Flow Cytometry *Recommended dilution:* 2 µg/ml
Immunoprecipitation Western Blotting Immunohistochemistry

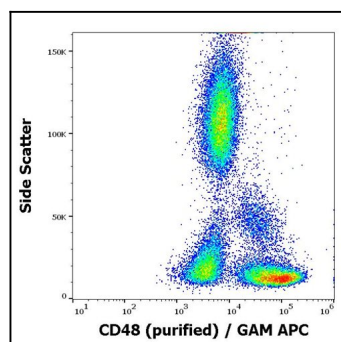


Fig. 1: Flow cytometry surface staining pattern of human peripheral whole blood stained using anti-human CD48 (MEM-102) purified antibody (concentration in sample 3 134g/ml, Goat anti-Mouse APC).

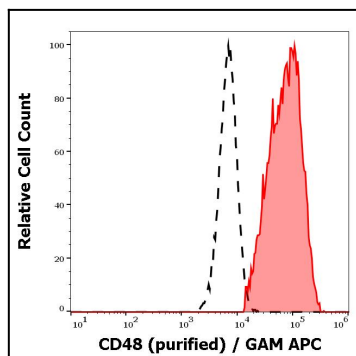


Fig. 2: Separation of CD48 positive lymphocytes (red-filled) from neutrophil granulocytes (black-dashed) in flow cytometry analysis (surface staining) of human peripheral whole blood using anti-human CD48 (MEM-102) purified antibody (concentration in sample 3 1¹/₄g/ml, Goat anti-Mouse APC).