

30-2174: Anti-CD48 / BLAST-1 Monoclonal Antibody (Clone:MEM-102)-PE Conjugated

Clonality :	Monoclonal
Clone Name :	MEM-102
Application :	FACS
Reactivity :	Human
Conjugate :	PE
Gene :	CD48
Gene ID :	962
Uniprot ID :	P09326
Alternative Name :	CD48,BCM1,BLAST1
Isotype :	Mouse IgG1
Immunogen Information :	Raji human Burkitt's lymphoma cell line

Description

CD48 (Blast-1) belongs to the CD2 subset of the Ig superfamily, which includes CD2, CD2F-10, CD58, CD84, CD150, CD229, CD244 and others. These molecules bind to the same or another members of their family, thus mediate homotypic or heterotypic adhesion. CD48 is a GPI-anchored protein broadly expressed on hematopoietic cells and serves as a high affinity ligand for 2B4 and low affinity ligand for CD2. 2B4-CD48 interaction among NK cells and NK-T cells regulates cell proliferation. Signaling through CD48 results in eosinophil activation and CD48 expression is increased in several infectious diseases.

Product Info

Amount :	100 tests
Storage condition :	Store in the dark at 2-8°C. Do not freeze. Avoid prolonged exposure to light.

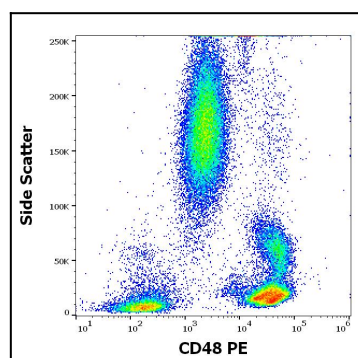


Figure 1: Flow cytometry surface staining pattern of human peripheral whole blood stained using anti-human CD48 (MEM-102) PE antibody (20 µl reagent / 100 µl of peripheral whole blood).

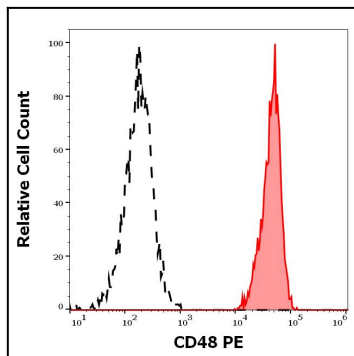


Figure 2: Separation of human monocytes (red-filled) from CD48 negative blood debris (black-dashed) in flow cytometry analysis (surface staining) of human peripheral whole blood stained using anti-human CD48 (MEM-102) PE antibody (20 μ l reagent / 100 μ l of peripheral whole blood).