

### 30-2220: Anti-CD52 / CAMPATH-1 Monoclonal Antibody (Clone:HI186)-PE Conjugated

<b>Clonality :</b>	Monoclonal
<b>Clone Name :</b>	HI186
<b>Application :</b>	FACS
<b>Reactivity :</b>	Human
<b>Conjugate :</b>	PE
<b>Gene :</b>	CD52
<b>Gene ID :</b>	1043
<b>Uniprot ID :</b>	P31358
<b>Alternative Name :</b>	CD52,CDW52,HE5
<b>Isotype :</b>	Mouse IgG2a
<b>Immunogen Information :</b>	Human tonsil

#### Description

CD52 (CAMPATH-1, HE5) is a highly glycosylated GPI-anchored 21-28 kDa glycopeptide which is present at high levels on lymphocytes, macrophages, epithelial cells of male reproductive tract and mature sperm. Its 12-amino acid backbone carries a complex N-linked carbohydrate moiety, which differs between sperm and leukocyte CD52, as well as the GPI anchor does. CD52 can be acquired by sperm cells from seminal plasma, where it is released by epithelial cells. Although CD52 is not an essential T-cell costimulator, its triggering results in activation of normal human T cells. CD52 is a very good target for antibody/complement-mediated cell lysis.

#### Product Info

<b>Amount :</b>	100 tests
<b>Storage condition :</b>	Store in the dark at 2-8°C. Do not freeze. Avoid prolonged exposure to light.

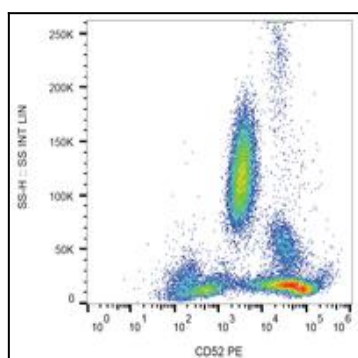


Figure 1: Surface staining of CD52 in human peripheral blood with anti-CD52 (HI186) PE.