

30-2179: Anti-CD58 / LFA-3 Monoclonal Antibody (Clone:MEM-63)-PE Conjugated

Clonality :	Monoclonal
Clone Name :	MEM-63
Application :	FACS
Reactivity :	Pig, Human
Conjugate :	PE
Gene :	CD58
Gene ID :	965
Uniprot ID :	P19256
Alternative Name :	CD58,LFA3
Isotype :	Mouse IgG1
Immunogen Information :	NALM-6 human pre-B cell line

Description

CD58 (LFA-3) is an immunoglobulin family adhesion molecule expressed by both hematopoietic and non-hematopoietic cells (often on antigen presenting cells) and serving as ligand of CD2. This interaction is important for T cell-mediated immunity. CD58 is expressed in transmembrane form and in GPI-anchored form; the later is constitutively associated with protein kinases whereas the transmembrane form activates kinase activity upon triggering. CD58 is a powerful tool for detection of minimal residual disease in acute lymphocytic leukemia, and for evaluation of liver damage related with hepatitis B.

Product Info

Amount :	100 tests
Storage condition :	Store in the dark at 2-8°C. Do not freeze. Avoid prolonged exposure to light.

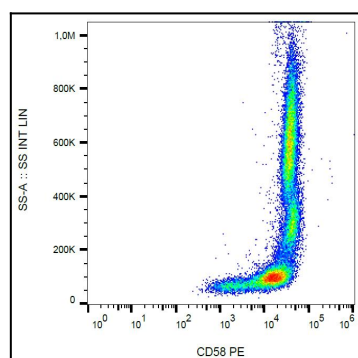


Figure 1: Surface staining of human peripheral blood cells with anti-CD58 (MEM-63) PE.