

## 30-1779: Anti-CD61 Monoclonal Antibody (Clone:VIPL2)-APC Conjugated

<b>Clonality :</b>	Monoclonal
<b>Clone Name :</b>	VIPL2
<b>Application :</b>	FACS
<b>Reactivity :</b>	Human
<b>Conjugate :</b>	APC
<b>Gene :</b>	ITGB3
<b>Gene ID :</b>	3690
<b>Uniprot ID :</b>	P05106
<b>Alternative Name :</b>	ITGB3,GP3A
<b>Isotype :</b>	Mouse IgG1
<b>Immunogen Information :</b>	Peripheral blood mononuclear cells

### Description

CD61 (beta3 integrin) is a transmembrane glycoprotein, which associates with CD41 or CD51 molecules to form heterodimeric adhesion receptors. CD41/CD61 complex is one of the earliest markers of the megakaryocytic lineage. It binds to fibronectin, fibrinogen and von Willebrand factor, and is involved in platelet aggregation. CD51/CD61 complex has similar binding properties and is involved in modulating migration and survival of angiogenic endothelial cells.

### Product Info

<b>Amount :</b>	100 tests
<b>Storage condition :</b>	Store in the dark at 2-8°C. Do not freeze. Avoid prolonged exposure to light.

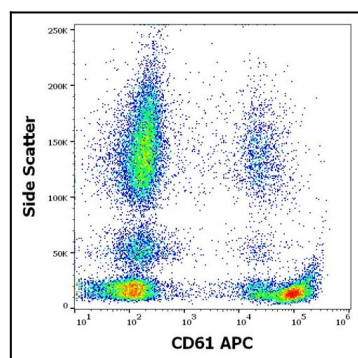


Figure 1: Flow cytometry surface staining pattern of human peripheral whole blood stained using anti-human CD61 (VIPL2) APC antibody (concentration in sample 3 µg/ml).

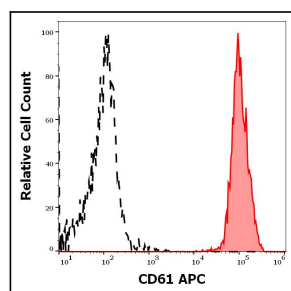


Figure 2: Separation of human CD61 positive CD45 negative thrombocytes (red-filled) from CD61 negative lymphocytes (black-dashed) in flow cytometry analysis (surface staining) of human peripheral whole blood stained using anti-human CD61 (VIPL2) APC antibody (concentration in sample 3 µg/ml).