

30-2301: Anti-CD61 Monoclonal Antibody (Clone:VIPL2)-PE Conjugated

Clonality :	Monoclonal
Clone Name :	VIPL2
Application :	FACS, WB, IHC-Fr
Reactivity :	Human, Non-Human Primates
Conjugate :	PE
Gene :	ITGB3
Gene ID :	3690
Uniprot ID :	P05106
Alternative Name :	ITGB3,GP3A
Isotype :	Mouse IgG1

Description

CD61 (beta3 integrin) is a transmembrane glycoprotein, which associates with CD41 or CD51 molecules to form heterodimeric adhesion receptors. CD41/CD61 complex is one of the earliest markers of the megakaryocytic lineage. It binds to fibronectin, fibrinogen and von Willebrand factor, and is involved in platelet aggregation. CD51/CD61 complex has similar binding properties and is involved in modulating migration and survival of angiogenic endothelial cells.

Product Info

Amount :	100 tests
Storage condition :	Store in the dark at 2-8°C. Do not freeze. Avoid prolonged exposure to light.

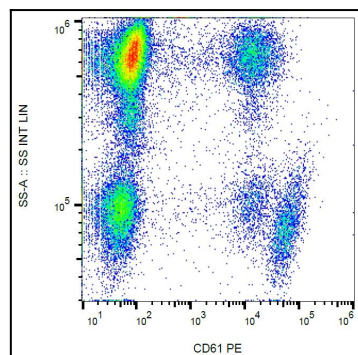


Figure 1: Surface staining of human peripheral blood with anti-human CD61 (VIPL2) PE.