

30-1310: Anti-CD62L / L-selectin Monoclonal Antibody (Clone:LT-TD180)

Clonality :	Monoclonal
Clone Name :	LT-TD180
Application :	FACS
Reactivity :	Human
Gene :	SELL
Gene ID :	6402
Uniprot ID :	P14151
Format :	Purified
Alternative Name :	SELL, LNHR, LYAM1
Isotype :	Mouse IgG1
Immunogen Information :	Peripheral blood leukocytes

Description

CD62L (L-selectin) is an adhesion glycoprotein that is constitutively expressed on the cell surface of leukocytes and mediates their homing to inflammatory sites and peripheral lymph nodes by enabling rolling along the venular wall. CD62L is also involved in activation-induced neutrophil aggregation. Activation-dependent CD62L shedding, however, counteracts neutrophil rolling. CD62L has also signaling roles including enhance of chemokine receptor expression. Similarly to CD62P, the major ligand of CD62L is PSGL-1 (P-selectin glycoprotein ligand-1).

Product Info

Amount :	0.1 mg
Purification :	Purified by precipitation and chromatography
Storage condition :	Store at 2-8°C. Do not freeze.

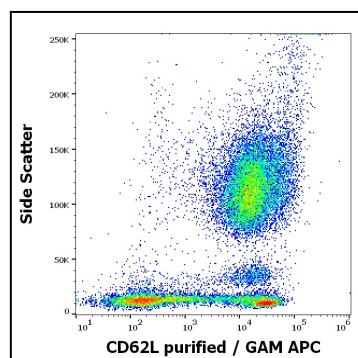


Figure 1: Flow cytometry surface staining pattern of human peripheral whole blood stained using anti-human CD62L (LT-TD180) purified antibody (concentration in sample 0.6 µg/ml) GAM APC.

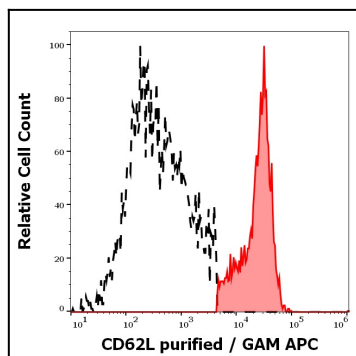


Figure 2: Separation of human CD62L positive lymphocytes (red-filled) from CD62L negative lymphocytes (black-dashed) in flow cytometry analysis (surface staining) of human peripheral whole blood stained using anti-human CD62L (LT-TD180) purified antibody (concentration in sample 0.6 $\mu\text{g/ml}$) GAM APC.