

### 30-2111: Anti-CD65 Monoclonal Antibody (Clone:VIM8)-FITC Conjugated

<b>Clonality :</b>	Monoclonal
<b>Clone Name :</b>	VIM8
<b>Application :</b>	FACS
<b>Reactivity :</b>	Human
<b>Conjugate :</b>	FITC
<b>Isotype :</b>	Mouse IgM
<b>Immunogen Information :</b>	THP-1 cell line

#### Description

CD65 is a fucosylated carbohydrate antigen (ceramide-dodecasaccharide, type II fucoganglioside), which serves as a ligand for CD62E (E-selectin). Its structure is Gal beta1-4 GlcNAc beta1-3 Gal beta1-4 GlcNAc (3-1 Fuc alpha) beta1-3 ceramide. Unlike CD65s, the CD65 antigen does not contain terminal sialic acid, the rest of their structure is identical. CD65 is expressed on granulocytes and monocytes and participates in cell adhesion. It has been reported as important for extravascular infiltration of acute monocytic leukemia cells.

#### Product Info

<b>Amount :</b>	100 tests
<b>Storage condition :</b>	Store in the dark at 2-8°C. Do not freeze. Avoid prolonged exposure to light.

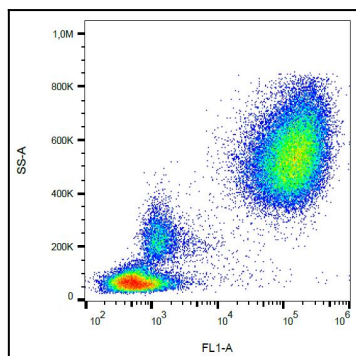


Figure 1: Surface staining of CD65 in human peripheral blood with anti-CD65 (VIM8) FITC.