

30-1416: Anti-CD66acde Monoclonal Antibody (Clone:CLB-gran/10)(Discontinued)

| | |
|--------------------------------|------------------------|
| Clonality : | Monoclonal |
| Clone Name : | CLB-gran/10 |
| Application : | FACS, IP, WB, IHC, ICC |
| Reactivity : | Human |
| Format : | Purified |
| Isotype : | Mouse IgG1 |
| Immunogen Information : | Human granulocytes |

Description

The CD66 molecules are 180-200 kDa glycoproteins of carcinoembryonic antigen family. They are present on all blood granulocytes and some tissue macrophages, but are absent from other hematopoietic cells. The expression of CD66 increases significantly on granulocytes upon their activation. CD66a (BGP1, CEACAM1) and CD66d (CGM1, CEACAM3), as well as CEACAM2 and 4, are transmembrane proteins, whereas CD66c (CEAL, NCA, CEACAM6) and CD66e (CEA, CEACAM5), as well as CEACAM7 and 8, are anchored to the plasma membrane by C-terminal glycosylphosphatidylinositol (GPI) lipid moiety.

Product Info

| | |
|----------------------------|---|
| Amount : | 0.1 mg |
| Purification : | Purified by protein-A affinity chromatography |
| Storage condition : | Store at 2-8°C. Do not freeze. |

Application Note

Flow Cytometry *Recommended dilution:* 2-8 $\mu\text{g/ml}$
Immunohistochemistry

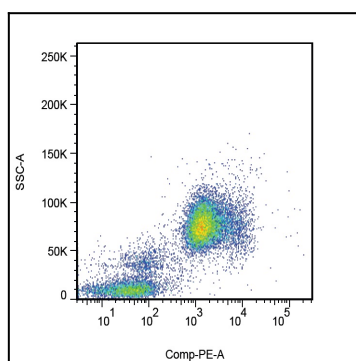


Figure 1: Surface staining of human peripheral blood cells with anti-CD66acde monoclonal antibody (clone CLB-gran/10).

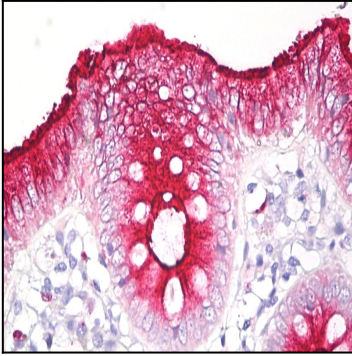


Figure 2: Immunohistochemistry staining of human colon (paraffin sections) using anti-CD66acde (clone CLB-gran/10).