

30-1333: Anti-CD66e / CEA Monoclonal Antibody (Clone:CB30)

Clonality :	Monoclonal
Clone Name :	CB30
Application :	FACS, IP, IHC, IHC-Fr
Reactivity :	Human
Gene :	CEACAM5
Gene ID :	1048
Uniprot ID :	P06731
Format :	Purified
Alternative Name :	CEACAM5,CEA
Isotype :	Mouse IgG1
Immunogen Information :	Human carcinoembryonic antigen (CEA; CEACAM5)

Description

The CD66e (CEA; 180-200 kDa) is a member of carcinoembryonic antigens, immunoglobulin supergene family and consists of a single N domain (structural homology to the immunoglobulin variable) and six immunoglobulin constant-like A (A1, A2, A3) and B domains (B1, B2, B3). Human CD66e is heavily glycosylated GPI anchored protein capable of both homophilic and heterophilic adhesion. Disease relevance: The CD66e may play a role in the process of metastasis of cancer cells. CD66e is found in serum and it is clinically used as a tumor marker for early detection of disease due to its expression in adenocarcinomas - potential target of tumor imaging and drug targeting.

Product Info

Amount :	0.1 mg
Purification :	Purified by protein-A affinity chromatography
Storage condition :	Store at 2-8°C. Do not freeze.

Application Note

Immunohistochemistry *Recommended dilution:* 10 μ g/ml (1:100)

Positive tissue: Adenocarcinoma of colon

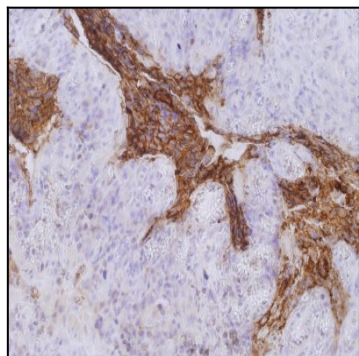


Figure 1: Immunohistochemistry staining of colorectal carcinoma (paraffin-embedded sections) with anti-human CD66e (CB30). Primary antibody dilution: 10 μ g/ml.

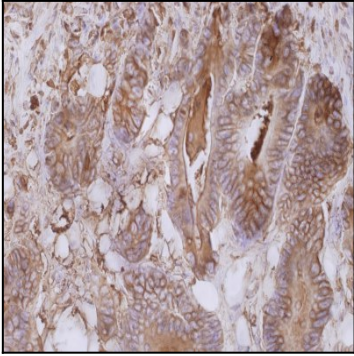


Figure 2: Immunohistochemistry staining of colorectal carcinoma (paraffin-embedded sections) with anti-human CD66e (CB30). Primary antibody dilution: 10 µg/ml.