

30-1936: Anti-CD7 Monoclonal Antibody (Clone:MEM-186)-FITC Conjugated

Clonality :	Monoclonal
Clone Name :	MEM-186
Application :	FACS, IP, WB, IHC
Reactivity :	Human
Conjugate :	FITC
Gene :	CD7
Gene ID :	924
Uniprot ID :	P09564
Alternative Name :	CD7
Isotype :	Mouse IgG1
Immunogen Information :	Human acute myelogenous leukaemia cell line KG-1.

Description

CD7, also known as gp40, is a member of the immunoglobulin superfamily found on T cells, NK cells, thymocytes, hematopoietic progenitors, and monocytes (weakly). CD7 is also expressed on acute lymphocytic leukemia (ALL). CD7 crosslinking induces a calcium flux in T lymphocytes, presumably as a result of cytoplasmic domain association with PI3-kinase. CD7 co-stimulation can induce cytokine secretion and modulate cellular adhesion. A ligand of CD7, epithelial cell secreted protein K12, is produced in thymus to regulate thymocyte signaling and cytokine release. In lung microvascular endothelial cells CD7 serves as an IgM Fc receptor. Expression of CD7 is an important marker used in leukemia diagnostics.

Product Info

Amount :	100 tests
Storage condition :	Store in the dark at 2-8°C. Do not freeze. Avoid prolonged exposure to light.

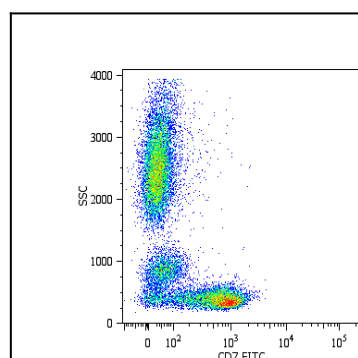


Figure 1: Surface staining of human peripheral blood cells with anti-human CD7 (MEM-186) FITC.