

## 30-1517: Anti-DLL4 Monoclonal Antibody (Clone:MHD4-46) Purified

<b>Clonality :</b>	Monoclonal
<b>Clone Name :</b>	MHD4-46
<b>Application :</b>	FACS
<b>Reactivity :</b>	Human
<b>Gene :</b>	DLL4
<b>Gene ID :</b>	54567
<b>Uniprot ID :</b>	Q9NR61
<b>Format :</b>	Purified
<b>Alternative Name :</b>	DLL4,UNQ1895/PRO4341
<b>Isotype :</b>	Mouse IgG1
<b>Immunogen Information :</b>	recombinant soluble human DLL4

### Description

DLL4 (Delta-like 4) is one of five ligands of Notch receptors. It interacts with Notch1 and Notch4. DLL4 is up-regulated at sites of physiologic and pathologic angiogenesis, whereas its expression is low in most adult normal tissues. It is also highly expressed in human clear-cell renal carcinomas, bladder cancers, and breast cancers. Blocking the DLL4-Notch interaction seems to be a promising therapeutic approach.

### Product Info

<b>Amount :</b>	0.1 mg
<b>Purification :</b>	Purified by protein-A affinity chromatography
<b>Storage condition :</b>	Store at 2-8°C. Do not freeze.

### Application Note

**Flow Cytometry Functional Application** blocking

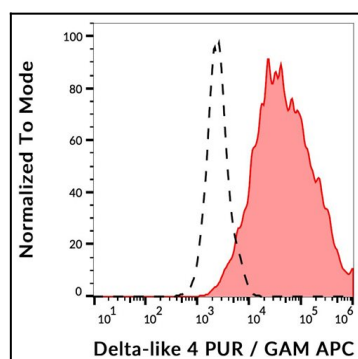


Figure 1: Separation of DLL4 transfected HD4 cells stained using anti-DLL4 (MHD4-46) purified antibody (GAM APC, red-filled) from DLL4 transfected HD4 cells unstained by primary antibody (GAM APC, black-dashed) in flow cytometry analysis (surface staining).