

### 30-1305: Anti-GFAP Monoclonal Antibody (Clone:GF-02)

<b>Clonality :</b>	Monoclonal
<b>Clone Name :</b>	GF-02
<b>Application :</b>	WB
<b>Reactivity :</b>	Human
<b>Gene :</b>	GFAP
<b>Gene ID :</b>	2670
<b>Uniprot ID :</b>	P14136
<b>Format :</b>	Purified
<b>Alternative Name :</b>	GFAP
<b>Isotype :</b>	Mouse IgM
<b>Immunogen Information :</b>	Pellet of porcine brain cold-stable proteins after depolymerization of microtubules.

#### Description

Glial Fibrillary Acidic Protein (GFAP) was discovered by Bignami et al. (1972) as a major fibrous protein of multiple sclerosis plaques. It was subsequently found to be a member of the 10 nm or intermediate filament protein family, specifically the intermediate filament protein family Class III, which also includes peripherin, desmin and vimentin. GFAP is heavily, and specifically, expressed in astrocytes and certain other astroglia in the central nervous system, in satellite cells in peripheral ganglia, and in non-myelinating Schwann cells in peripheral nerves. In addition, neural stem cells frequently strongly express GFAP. It is also found in the lens epithelium, Kupffer cells of the liver, in some cells in salivary tumors and has been reported in erythrocytes. Although its function is not fully understood, GFAP protein is probably involved in controlling the shape and movement of astrocytes. The protein probably also plays a significant role in the interactions of astrocytes with other cells, which are required for the formation and maintenance of the insulating layer (myelin) that covers nerve cells. Additionally, GFAP protein may assist in maintaining the protective barrier that allows only certain substances to pass between blood vessels and the brain (blood-brain barrier). In adults, GFAP levels increase as a result of the proliferation of astrocytes that occurs in a response to a variety of physical, chemical and etiological insults, including Alzheimer's disease, epilepsy and multiple sclerosis. Antibodies to GFAP are therefore very useful as markers of astrocytic cells and neural stem cells and for distinguishing of neoplasms of astrocytic origin from other neoplasms in the central nervous system. Finally, Alexander's disease was recently shown to be caused by point mutations in protein coding region of the GFAP gene (Brenner et al., 2001). All forms of Alexander disease are characterized by the presence of Rosenthal fibers, which are GFAP containing cytoplasmic inclusions found in astrocytes.

#### Product Info

<b>Amount :</b>	0.1 mg
<b>Purification :</b>	Purified by precipitation and chromatography
<b>Storage condition :</b>	Store at 2-8°C. Do not freeze.

#### Application Note

Western blotting: Recommended dilution: 1-2 µg/ml.

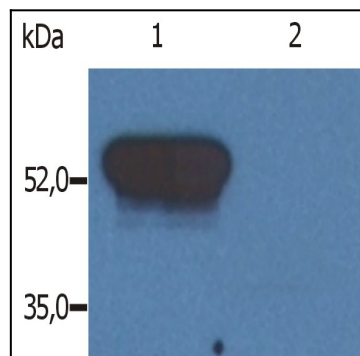


Figure 1: Western Blotting analysis (reducing conditions) of GFAP in porcine brain lysate. Lane 1: immunostaining with anti-GFAP (GF-02). Lane 2: immunostaining with Isotype mouse IgM control (PFR-03; )