

## 30-1387: Anti-Grb2 Polyclonal Antibody

<b>Clonality :</b>	Polyclonal
<b>Application :</b>	WB
<b>Reactivity :</b>	Human
<b>Gene :</b>	GRB2
<b>Gene ID :</b>	2885
<b>Uniprot ID :</b>	P62993
<b>Format :</b>	Purified
<b>Alternative Name :</b>	GRB2,ASH
<b>Isotype :</b>	Rabbit IgG
<b>Immunogen Information :</b>	Synthetic peptide corresponding to C-terminus of human Grb2 (amino acids 198-217).

### Description

Grb2 (growth factor receptor-bound protein 2) is a highly conserved adaptor protein composed of central SH2 domain flanked by two terminal SH3 domains. Grb2 mediates coupling of receptor protein tyrosine kinases to a guanine nucleotide exchange factor Sos, thereby enabling the tyrosine kinases to stimulate activity of Ras and hence of MAP kinase pathway. Grb2 also can bind to receptor protein tyrosine phosphatases and affect their signaling.

### Product Info

<b>Amount :</b>	0.1 mg
<b>Purification :</b>	Purified from rabbit serum by affinity chromatography
<b>Storage condition :</b>	Store at 2-8°C. Do not freeze.

### Application Note

**Western Blotting** *Recommended dilution:* 1  $\mu$ g/ml  
*Positive control:* RAMOS human Burkitt lymphoma cell line

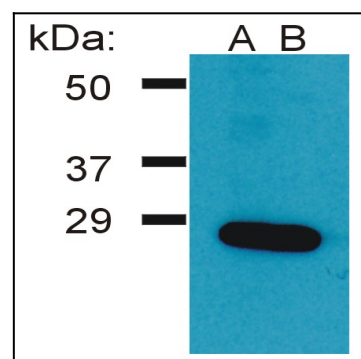


Figure 1: Western Blotting analysis (reducing conditions) of Ramos cell lysate using two batches of rabbit anti-Grb2 polyclonal (A, B).