

### 30-2262: Anti-HLA-A2 Monoclonal Antibody (Clone:BB7.2)-PE Conjugated

<b>Clonality :</b>	Monoclonal
<b>Clone Name :</b>	BB7.2
<b>Application :</b>	FACS, IP
<b>Reactivity :</b>	Human
<b>Conjugate :</b>	PE
<b>Gene :</b>	HLA-A
<b>Gene ID :</b>	3105
<b>Uniprot ID :</b>	P01892
<b>Alternative Name :</b>	HLA-A,HLAA
<b>Isotype :</b>	Mouse IgG2b
<b>Immunogen Information :</b>	HLA-A2 solubilised by papain

#### Description

HLA-A2 (44 kDa) is the most frequent HLA-A allele in human ethnic populations. HLA-A, together with HLA-B and HLA-C, represent human HLA class I major histocompatibility (MHC) antigens. These intrinsic membrane glycoproteins are expressed on nucleated cells and noncovalently associate with an invariant beta2 microglobulin. They carry foreign determinants important for immune recognition by cytotoxic T cells, thus important for anti-viral and anti-tumour defence.

#### Product Info

<b>Amount :</b>	100 tests
<b>Storage condition :</b>	Store in the dark at 2-8°C. Do not freeze. Avoid prolonged exposure to light.

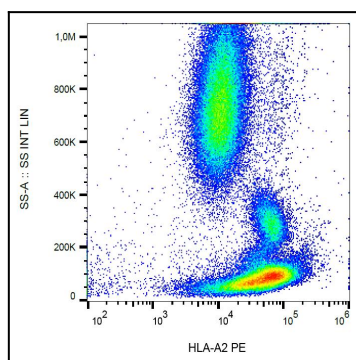


Figure 1: Surface staining of human peripheral blood cells using anti-HLA-A2 (BB7.2) PE.