

### 30-2259: Anti-HLA-B7 Monoclonal Antibody (Clone:BB7.1)-PE Conjugated

<b>Clonality :</b>	Monoclonal
<b>Clone Name :</b>	BB7.1
<b>Application :</b>	FACS
<b>Reactivity :</b>	Human, Non-Human Primates
<b>Conjugate :</b>	PE
<b>Gene :</b>	HLA-B
<b>Gene ID :</b>	3106
<b>Uniprot ID :</b>	P01889
<b>Alternative Name :</b>	HLA-B,HLAB
<b>Isotype :</b>	Mouse IgG1
<b>Immunogen Information :</b>	Papain solubilised HLA-A2, B7

#### Description

HLA-B7 allele of human HLA class I major histocompatibility (MHC) antigen indicates higher risk of breast cancer and cervical cancer. Expression of HLA-B7 together with HLA-B27 is associated with increased susceptibility to spondyloarthropathies. Flow cytometry detection of these two alleles is being used to screen for patients, who suffer from inflammatory disorders affecting the sacroiliac and intervertebral joints, such as ankylosing spondylosis (AS). The HLA-B7 antigen (11 alleles) is expressed in 22% of healthy Caucasian individuals.

#### Product Info

<b>Amount :</b>	100 tests
<b>Storage condition :</b>	Store in the dark at 2-8°C. Do not freeze. Avoid prolonged exposure to light.

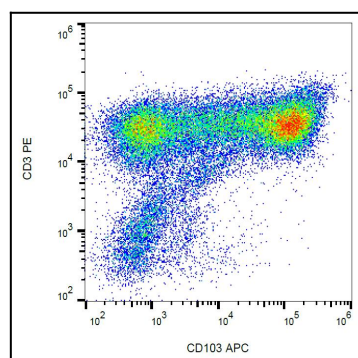


Figure 1: Surface staining of HLA-B7 on human peripheral blood cells with anti-HLA-B7 (BB7.1) PE.