

30-1612: Anti-HLA-Class I Monoclonal Antibody (Clone:W6/32)-Low Endotoxin

| | |
|--------------------------------|--------------------------------|
| Clonality : | Monoclonal |
| Clone Name : | W6/32 |
| Application : | FACS |
| Reactivity : | Human |
| Gene : | HLA-A |
| Uniprot ID : | P01892 |
| Format : | Low Endotoxin |
| Alternative Name : | HLA-A, HLAA |
| Isotype : | Mouse IgG2a |
| Immunogen Information : | Membrane of human tonsil cells |

Description

HLA-class I major histocompatibility (MHC) antigens are intrinsic membrane glycoproteins expressed on nucleated cells and noncovalently associated with an invariant beta2 microglobulin. They carry foreign determinants important for immune recognition by cytotoxic T cells, thus important for anti-viral and anti-tumour defence. Human HLA-class I antigens are represented by HLA-A, HLA-B and HLA-C molecules.

Product Info

| | |
|----------------------------|---|
| Amount : | 0.1 mg |
| Purification : | Purified by protein-A affinity chromatography |
| Storage condition : | Store at 2-8°C. Do not freeze. |

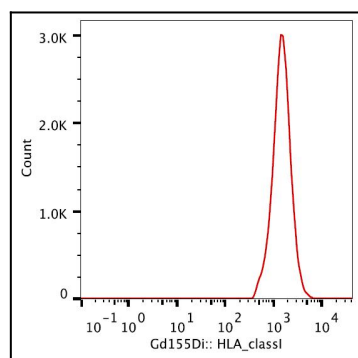


Figure 1: Surface staining (mass cytometry) of PBMC after Ficoll-Paque separation with anti-HLA-class I (W6/32) Gd155. Gated on DNA.