

### 30-2185: Anti-HLA-Class I Monoclonal Antibody (Clone:MEM-147)-PE Conjugated

<b>Clonality :</b>	Monoclonal
<b>Clone Name :</b>	MEM-147
<b>Application :</b>	FACS
<b>Reactivity :</b>	Human
<b>Conjugate :</b>	PE
<b>Gene :</b>	HLA-A
<b>Uniprot ID :</b>	P01892
<b>Alternative Name :</b>	HLA-A, HLAA
<b>Isotype :</b>	Mouse IgG1
<b>Immunogen Information :</b>	PHA-activated peripheral blood lymphocytes

#### Description

HLA-class I major histocompatibility (MHC) antigens are intrinsic membrane glycoproteins expressed on nucleated cells and noncovalently associated with an invariant beta2 microglobulin. They carry foreign determinants important for immune recognition by cytotoxic T cells, thus important for anti-viral and anti-tumour defence. Human HLA-class I antigens are represented by HLA-A, HLA-B and HLA-C molecules.

#### Product Info

<b>Amount :</b>	0.1 mg
<b>Storage condition :</b>	Store in the dark at 2-8°C. Do not freeze. Avoid prolonged exposure to light.

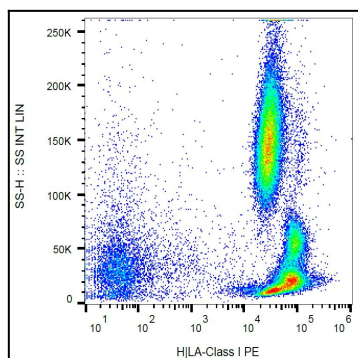


Figure 1:: Surface staining of human peripheral blood with anti-HLA-class I (MEM-147) PE.