

30-2216: Anti-HLA-Class I Monoclonal Antibody (Clone:MEM-123)-PE Conjugated

Clonality :	Monoclonal
Clone Name :	MEM-123
Application :	FACS
Reactivity :	Human
Conjugate :	PE
Gene :	HLA-A
Uniprot ID :	P01892
Alternative Name :	HLA-A, HLAA
Isotype :	Mouse IgG3
Immunogen Information :	COS-7 African green monkey kidney cells

Description

HLA-class I major histocompatibility (MHC) antigens are intrinsic membrane glycoproteins expressed on nucleated cells and noncovalently associated with an invariant beta2 microglobulin. They carry foreign determinants important for immune recognition by cytotoxic T cells, thus important for anti-viral and anti-tumour defence. Human HLA-class I antigens are represented by HLA-A, HLA-B and HLA-C molecules.

Product Info

Amount :	0.1 mg
Storage condition :	Store in the dark at 2-8°C. Do not freeze. Avoid prolonged exposure to light.

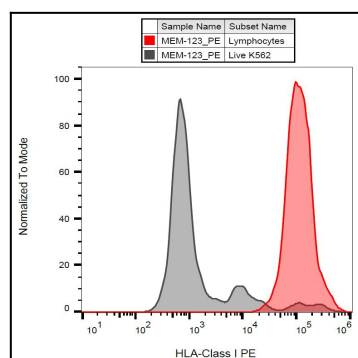


Figure 1: Surface staining of K562 cells with anti-HLA-class I (MEM-123) PE.