

30-2231: Anti-HLA-Class I Monoclonal Antibody (Clone:W6/32)-PE Conjugated

Clonality :	Monoclonal
Clone Name :	W6/32
Application :	FACS
Reactivity :	Human
Conjugate :	PE
Gene :	HLA-A
Uniprot ID :	P01892
Alternative Name :	HLA-A, HLAA
Isotype :	Mouse IgG2a
Immunogen Information :	Membrane of human tonsil cells

Description

HLA-class I major histocompatibility (MHC) antigens are intrinsic membrane glycoproteins expressed on nucleated cells and noncovalently associated with an invariant beta2 microglobulin. They carry foreign determinants important for immune recognition by cytotoxic T cells, thus important for anti-viral and anti-tumour defence. Human HLA-class I antigens are represented by HLA-A, HLA-B and HLA-C molecules.

Product Info

Amount :	0.1 mg
Storage condition :	Store in the dark at 2-8°C. Do not freeze. Avoid prolonged exposure to light.

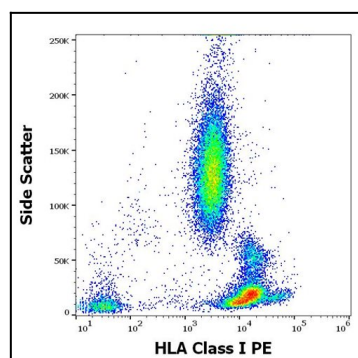


Figure 1: Flow cytometry surface staining pattern of human peripheral whole blood stained using anti-HLA Class I (W6/32) PE antibody (concentration in sample 1.67 µg/ml).

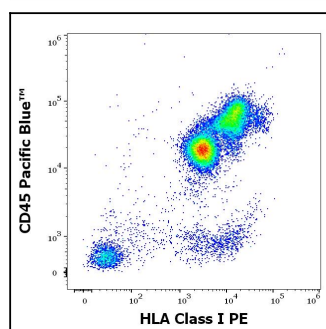


Figure 2: Flow cytometry multicolor surface staining pattern of human peripheral whole blood stained using anti-human CD45 (MEM-28) Pacific Blue antibody (4 µl reagent / 100 µl of peripheral whole blood) and anti-HLA Class I (W6/32) PE antibody (concentration in sample 1.67 µg/ml).

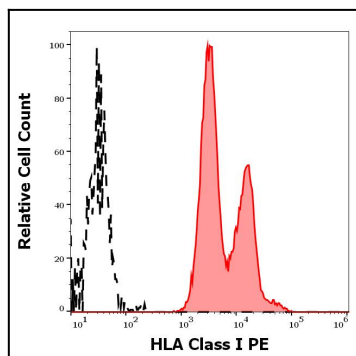


Figure 3: Separation of human leukocytes (red-filled) from HLA Class I negative blood debris (black-dashed) in flow cytometry analysis (surface staining) of human peripheral whole blood stained using anti-HLA Class I (W6/32) PE antibody (concentration in sample 1.67 $\mu\text{g/ml}$).