

### 30-2015: Anti-HLA-DR Monoclonal Antibody (Clone:MEM-12)-FITC Conjugated

|                                |  |
|--------------------------------|--|
| <b>Clonality :</b>             | Monoclonal   |
| <b>Clone Name :</b>            | MEM-12   |
| <b>Application :</b>           | FACS   |
| <b>Reactivity :</b>            | Human  |
| <b>Conjugate :</b>             | FITC   |
| <b>Gene :</b>                  | HLA-DRA  |
| <b>Gene ID :</b>               | 3122   |
| <b>Uniprot ID :</b>            | P01903   |
| <b>Alternative Name :</b>      | HLA class II histocompatibility antigen, DR alpha chain, MHC class II antigen DRACD74, DHLAG |
| <b>Isotype :</b>               | Mouse IgG1   |
| <b>Immunogen Information :</b> | thymocyte membrane   |

#### Description

HLA-DR, a member of MHC class II glycoproteins, that bind intracellularly processed peptides and present them to the Th cells, is composed of 36 kDa alpha chain and 27 kDa beta chain, both anchored in the plasma membrane. Together with other MHC II molecules HLA-DR plays a central role in the immune system.

#### Product Info

|                            |   |
|----------------------------|---|
| <b>Amount :</b>            | 100 tests   |
| <b>Storage condition :</b> | Store in the dark at 2-8°C. Do not freeze. Avoid prolonged exposure to light. |

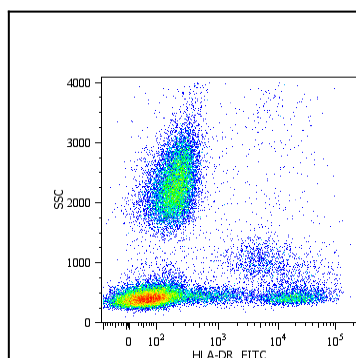


Figure 1: Surface staining of human peripheral blood cells with anti-human HLA-DR (MEM-12) FITC.