

36-1557: Monoclonal Antibody to Progesterone Receptor (Marker of Progestin Dependence)(Clone : SPM566)

Clonality :	Monoclonal
Clone Name :	SPM566
Application :	WB,IHC
Reactivity :	Human
Gene :	PGR
Gene ID :	5241
Uniprot ID :	P06401
Format :	Purified
Alternative Name :	PGR,NR3C3
Isotype :	Mouse IgG1, kappa
Immunogen Information :	Recombinant human Progesterone Receptor protein

Description

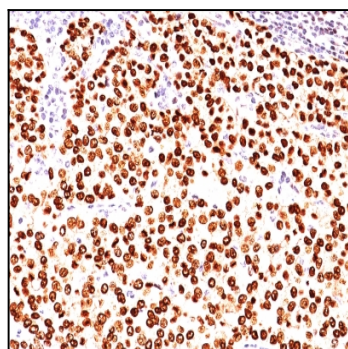
This MAb is specific to progesterone receptor and shows minimal cross-reaction with other members of the family. Progesterone receptor is expressed as two major isoforms, PR-A (81kDa) and PR-B (116kDa). Expression of PgR has been suggested to reflect a intact estrogen regulatory machinery and therefore, predict better clinical response to endocrine therapy than ER alone. It is excellent for immunohistochemical staining of formalin/paraffin tissues.

Product Info

Amount :	100 µg
Purification :	Affinity Chromatography
Content :	100 µg in 500 µl PBS containing 0.05% BSA and 0.05% sodium azide. Sodium azide is highly toxic.
Storage condition :	Store the antibody at 4°C; stable for 6 months. For long-term storage; store at -20°C. Avoid repeated freeze and thaw cycles.

Application Note

Western Blot (1-2ug/ml); ,Immunohistochemistry (Formalin-fixed) (1-2ug/ml for 30 minutes at RT),(Staining of formalin-fixed tissues requires heating tissue sections in 10mM Tris with 1mM EDTA, pH 9.0, for 45 min at 95 °C followed by cooling at RT for 20 minutes),



Formalin-fixed, paraffin-embedded human Breast Carcinoma stained with Progesterone Receptor Monoclonal Antibody (SPM566).