

30-1203: Anti-IgG (Fab) Monoclonal Antibody (Clone:4A11)

Clonality :	Monoclonal
Clone Name :	4A11
Application :	FACS, WB, ELISA
Reactivity :	Human
Format :	Purified
Isotype :	Mouse IgG2b
Immunogen Information :	Purified human IgG.

Description

Immunoglobulin G (IgG) is a 150 kDa soluble protein that serves as a major effector molecule of the humoral immune response in man. Its concentration in blood plasma of healthy individuals is approximately 10 g/l, which accounts for about 75% of the total plasma immunoglobulins. IgG has the highest stability of blood immunoglobulins (T_{1/2} = 21 days) and is able of placental transfer. IgG is secreted by plasma cells at a comparably high rate as other immunoglobulins.

Product Info

Amount :	0.1 mg
Purification :	Purified by precipitation and chromatography
Storage condition :	Store at 2-8°C. Do not freeze.

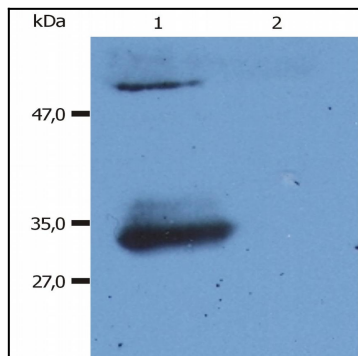


Figure 1: Western Blotting analysis (reducing conditions) of human IgG Fab fragment using anti-human IgG Fab fragment (4A11). Lane 1: Normal human immunoglobulins. Lane 2: Normal bovine immunoglobulins