

### 30-1714: APC Conjugated Anti-IgM Monoclonal Antibody (Clone:CH2)

<b>Clonality :</b>	Monoclonal
<b>Clone Name :</b>	CH2
<b>Application :</b>	FACS
<b>Reactivity :</b>	Human
<b>Conjugate :</b>	APC
<b>Gene :</b>	IGHM
<b>Uniprot ID :</b>	P01871
<b>Alternative Name :</b>	Immunoglobulin heavy constant mu
<b>Isotype :</b>	Mouse IgG1
<b>Immunogen Information :</b>	Purified human IgM.

#### Description

Immunoglobulin M (IgM) is produced as a 900 kDa pentamer, which is an efficient complement binder. This antibody type is produced initially in the immune response and it is the first immunoglobulin class to be synthesized by a fetus or newborn. IgM antibodies do not cross the placenta. IgM concentration in blood is 0.12 g/l and its biological survival (plasma T1/2) is 5 days.

#### Product Info

<b>Amount :</b>	0.1 mg
<b>Storage condition :</b>	Store in the dark at 2-8°C. Do not freeze. Avoid prolonged exposure to light.

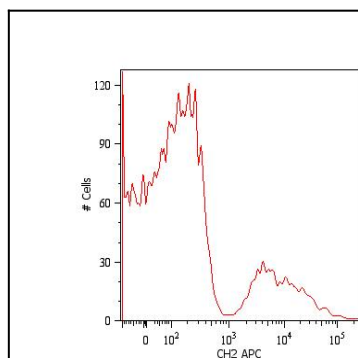


Figure 1: Surface staining of human peripheral blood cells with anti-human IgM (CH2) APC. Cells in the lymphocyte gate were used for analysis.