

30-2206: PE Conjugated Anti-IgM Monoclonal Antibody (Clone:CH2)

| | |
|--------------------------------|----------------------------------|
| Clonality : | Monoclonal |
| Clone Name : | CH2 |
| Application : | FACS |
| Reactivity : | Human |
| Conjugate : | PE |
| Gene : | IGHM |
| Uniprot ID : | P01871 |
| Alternative Name : | Immunoglobulin heavy constant mu |
| Isotype : | Mouse IgG1 |
| Immunogen Information : | Purified human IgM. |

Description

Immunoglobulin M (IgM) is produced as a 900 kDa pentamer, which is an efficient complement binder. This antibody type is produced initially in the immune response and it is the first immunoglobulin class to be synthesized by a fetus or newborn. IgM antibodies do not cross the placenta. IgM concentration in blood is 0.12 g/l and its biological survival (plasma T1/2) is 5 days.

Product Info

| | |
|----------------------------|---|
| Amount : | 0.1 mg |
| Storage condition : | Store in the dark at 2-8°C. Do not freeze. Avoid prolonged exposure to light. |

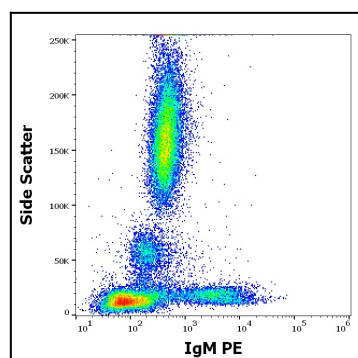


Figure 1: Flow cytometry surface staining pattern of human peripheral whole blood stained using anti-human IgM (CH2) PE antibody (concentration in sample 1.67 µg/ml).

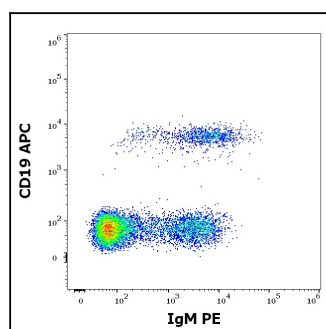


Figure 2: Flow cytometry multicolor surface staining pattern of human lymphocytes stained using anti-human CD19 (LT19) APC antibody (10 µl reagent / 100 µl of peripheral whole blood) and anti-human IgM (CH2) PE antibody (concentration in sample 1.67 µg/ml).

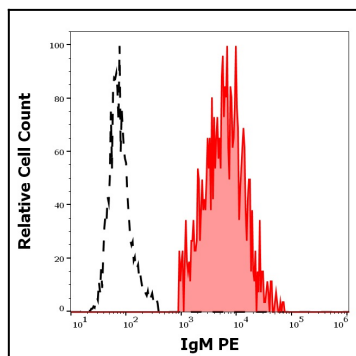


Figure 3: Separation of human IgM positive CD19 positive B cells (red-filled) from IgM negative CD19 negative lymphocytes (black-dashed) in flow cytometry analysis (surface staining) of human peripheral whole blood stained using anti-human IgM (CH2) PE antibody (concentration in sample 1.67 µg/ml).