

### 30-1797: APC Conjugated Anti-Kappa light chains Monoclonal Antibody (Clone:TB28-2)

<b>Clonality :</b>	Monoclonal
<b>Clone Name :</b>	TB28-2
<b>Application :</b>	FACS
<b>Reactivity :</b>	Human
<b>Conjugate :</b>	APC
<b>Gene :</b>	IGKV3-20
<b>Gene ID :</b>	28912
<b>Uniprot ID :</b>	P01619
<b>Alternative Name :</b>	IGKV3-20
<b>Isotype :</b>	Mouse IgG1
<b>Immunogen Information :</b>	Human IgG-kappa myeloma protein

#### Description

Immunoglobulin classes share the same basic four polypeptide chain structure of two heavy chains (five heavy chains types) and two light chains (kappa, lambda; both having a molecular weight of 22.5kDa). Kappa and lambda consist of a variable region and a constant region and can easily be differentiated by the antigenic properties of the constant region. The ratio of kappa to lambda is 70:30.

#### Product Info

<b>Amount :</b>	100 tests
<b>Storage condition :</b>	Store in the dark at 2-8°C. Do not freeze. Avoid prolonged exposure to light.

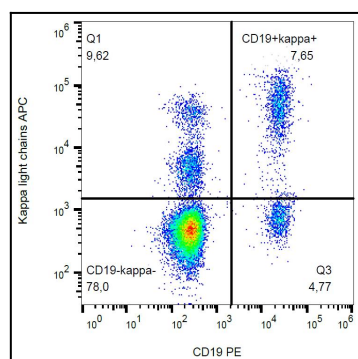


Figure 1: Surface staining of kappa light chains in human peripheral blood cells with anti-kappa light chains (TB28-2) APC.