

### 30-2020: FITC Conjugated Anti-Kappa light chains Monoclonal Antibody (Clone:A8B5)

<b>Clonality :</b>	Monoclonal
<b>Clone Name :</b>	A8B5
<b>Application :</b>	FACS
<b>Reactivity :</b>	Human
<b>Conjugate :</b>	FITC
<b>Gene :</b>	IGKC
<b>Uniprot ID :</b>	P01834
<b>Alternative Name :</b>	Ig kappa chain C region, Ig kappa chain C region AG, Ig kappa chain C region CUM
<b>Isotype :</b>	Mouse IgG1

#### Description

Immunoglobulin classes share the same basic four polypeptide chain structure of two heavy chains (five heavy chains types) and two light chains (kappa, lambda; both having a molecular weight of 22.5kDa). Kappa and lambda consist of a variable region and a constant region and can easily be differentiated by the antigenic properties of the constant region. The ratio of kappa to lambda is 70:30.

#### Product Info

<b>Amount :</b>	100 tests
<b>Storage condition :</b>	Store in the dark at 2-8°C. Do not freeze. Avoid prolonged exposure to light.

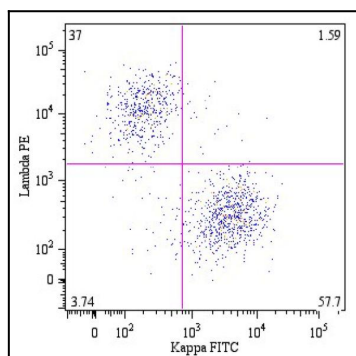


Figure 1: B lymphocytes (CD19+) in a dot-plot Lambda PE vs. Kappa FITC. Kappa light chain detected by A8B5 antibody and lambda light chain by 4C2 antibody, CD19 by LT19 antibody.