

30-2248: PE Conjugated Anti-Kappa light chains Monoclonal Antibody (Clone:A8B5)

Clonality :	Monoclonal
Clone Name :	A8B5
Application :	FACS
Reactivity :	Human
Conjugate :	PE
Gene :	IGKV3-20
Gene ID :	28912
Uniprot ID :	P01619
Alternative Name :	IGKV3-20
Isotype :	Mouse IgG1

Description

Immunoglobulin classes share the same basic four polypeptide chain structure of two heavy chains (five heavy chains types) and two light chains (kappa, lambda; both having a molecular weight of 22.5kDa). Kappa and lambda consist of a variable region and a constant region and can easily be differentiated by the antigenic properties of the constant region. The ratio of kappa to lambda is 70:30.

Product Info

Amount :	100 tests
Storage condition :	Store in the dark at 2-8°C. Do not freeze. Avoid prolonged exposure to light.

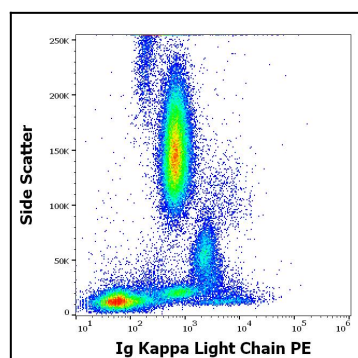


Figure 1: Flow cytometry surface staining pattern of human peripheral whole blood stained using anti-human Ig Kappa Light Chain (A8B5) PE antibody (20 µl reagent / 100 µl of peripheral whole blood).

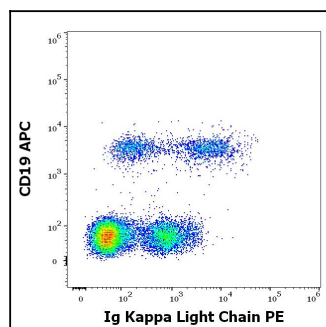


Figure 2: Flow cytometry multicolor surface staining pattern of human lymphocytes stained using anti-human CD19 (LT19) APC antibody (10 µl reagent / 100 µl of peripheral whole blood) and anti-human Ig Kappa Light Chain (A8B5) PE antibody (20 µl reagent / 100 µl of peripheral whole blood).

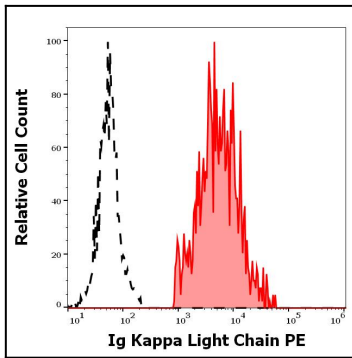


Figure 3: Separation of human Ig Kappa Light Chain positive CD19 positive B cells (red-filled) from Ig Kappa Light Chain negative CD19 negative lymphocytes (black-dashed) in flow cytometry analysis (surface staining) of human peripheral whole blood stained using anti-human Ig Kappa Light Chain (A8B5) PE antibody (20 µl reagent / 100 µl of peripheral whole blood).