

30-2326: PE Conjugated Anti-Kappa light chains Monoclonal Antibody (Clone:TB28-2)

Clonality :	Monoclonal
Clone Name :	TB28-2
Application :	FACS
Reactivity :	Human
Conjugate :	PE
Gene :	IGKV3-20
Gene ID :	28912
Uniprot ID :	P01619
Alternative Name :	IGKV3-20
Isotype :	Mouse IgG1
Immunogen Information :	Human IgG-kappa myeloma protein

Description

Immunoglobulin classes share the same basic four polypeptide chain structure of two heavy chains (five heavy chains types) and two light chains (kappa, lambda; both having a molecular weight of 22.5kDa). Kappa and lambda consist of a variable region and a constant region and can easily be differentiated by the antigenic properties of the constant region. The ratio of kappa to lambda is 70:30.

Product Info

Amount :	100 tests
Storage condition :	Store in the dark at 2-8°C. Do not freeze. Avoid prolonged exposure to light.

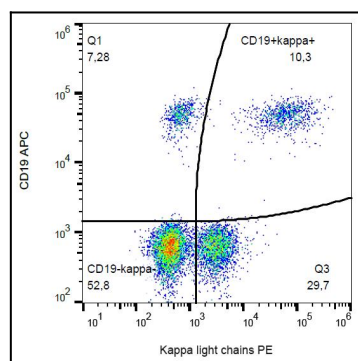


Figure 1: Surface staining of kappa light chains in human peripheral blood cells with anti-kappa light chains (TB28-2) PE.