

30-1075: Anti-Ki-67 Monoclonal Antibody (Clone:Ki-67)

Clonality :	Monoclonal
Clone Name :	Ki-67
Application :	FACS
Reactivity :	Human
Gene :	MKI67
Gene ID :	4288
Uniprot ID :	P46013
Format :	Purified
Alternative Name :	MKI67
Isotype :	Mouse IgG1
Immunogen Information :	Nuclei of the Hodgkin lymphoma cell line L428

Description

Ki-67 is a highly protease-sensitive nuclear protein expressed in two isoforms (345 kDa and 395 kDa), both of which are identified by the antibody clone Ki-67. The Ki-67 antigen is essential for cell proliferation and its expression is restricted to the cycling cells. It is detected in G1, S, G2 and M phase, whereas it is absent in cells which are in G0 phase and it is not associated with DNA repair processes. Ki-67 thus represents an important tool for detection of proliferating cells, which is of great importance in tumor diagnostics and is commonly used as a prognostic factor in cancer studies.

Product Info

Amount :	0.1 mg
Purification :	Purified by protein-A affinity chromatography
Storage condition :	Store at 2-8°C. Do not freeze.

Application Note

Flow cytometry: Recommended dilution: 1-5 µg/ml. Intracellular staining.
Immunocytochemistry: Paraformaldehyde fixation; recommended antibody concentration 1 µg/ml.

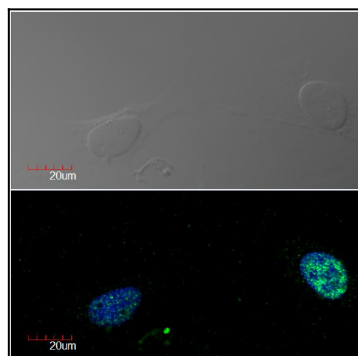


Figure 1: Immunocytochemistry detection of Ki-67 in U2OS cell line (human osteosarcoma) using monoclonal antibody Ki-67 (green). Cell nuclei stained with DAPI (blue).