

30-1738: APC Conjugated Anti-Lambda light chains Monoclonal Antibody (Clone:4C2)

Clonality : Monoclonal
Clone Name : 4C2
Application : FACS
Reactivity : Human
Conjugate : APC
Gene : IGLC1
Uniprot ID : P0CG04
Alternative Name : Ig lambda chain C region MGC, Ig lambda-1 chain C region
Isotype : Mouse IgG1

Description

Immunoglobulin classes share the same basic four polypeptide chain structure of two heavy chains (five heavy chains types) and two light chains (kappa, lambda; both having a molecular weight of 22.5kDa). Kappa and lambda consist of a variable region and a constant region and can easily be differentiated by the antigenic properties of the constant region. The ratio of kappa to lambda is 70:30.

Product Info

Amount : 100 tests
Storage condition : Store in the dark at 2-8°C. Do not freeze. Avoid prolonged exposure to light.

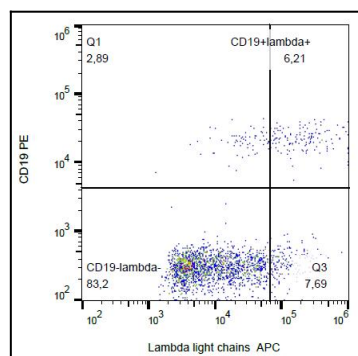


Figure 1: Surface staining of human peripheral blood with anti-human lambda light chain (4C2) APC.