

### 30-2346: PE Conjugated Anti-LARGE1 Monoclonal Antibody (Clone:LARGE-02)

<b>Clonality :</b>	Monoclonal
<b>Clone Name :</b>	LARGE-02
<b>Application :</b>	FACS
<b>Reactivity :</b>	Human
<b>Conjugate :</b>	PE
<b>Gene :</b>	LARGE1
<b>Gene ID :</b>	9215
<b>Uniprot ID :</b>	O95461
<b>Alternative Name :</b>	LARGE1,KIAA0609,LARGE
<b>Isotype :</b>	Mouse IgG2b
<b>Immunogen Information :</b>	Recombinant fragment of human LARGE1 (amino acids 35-142)

#### Description

LARGE1 serves as a glycosyltransferase which participates in glycosylation of the muscle membrane protein alpha-dystroglycan. Mutations of LARGE1 lead to hypoglycosylation of alpha-dystroglycan and cause congenital muscular dystrophy (MDC1D) associated with severe mental retardation. Altered alpha-dystroglycan glycosylation may also play a role in cancer, as hypoglycosylation of the protein and loss of laminin binding have been demonstrated in invasive carcinoma cells.

#### Product Info

<b>Amount :</b>	0.1 mg
<b>Storage condition :</b>	Store in the dark at 2-8°C. Do not freeze. Avoid prolonged exposure to light.

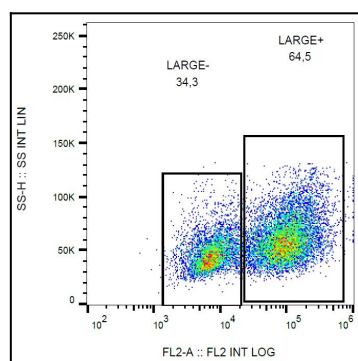


Figure 1: Flow cytometry analysis of LARGE1 in HEK293-LARGE1 transfectants using mouse monoclonal antibody (clone LARGE-02) PE.