

30-1236: Anti-LAT Monoclonal Antibody (Clone:LAT-01)

Clonality :	Monoclonal
Clone Name :	LAT-01
Application :	WB
Reactivity :	Human
Gene :	LAT
Gene ID :	27040
Uniprot ID :	O43561
Format :	Purified
Alternative Name :	Linker for activation of T-cells family member 1, 36 kDa phospho-tyrosine adaptor protein, p36-38
Isotype :	Mouse IgG1
Immunogen Information :	Bacterially produced recombinant polypeptide corresponding to the entire cytoplasmic domain of human LAT.

Description

LAT (Linker for Activation of T cells) is a 36-38 kDa double-palmitoylated transmembrane adaptor protein expressed by T cells, pre-B cells, NK cells, mast cells and platelets. After immunoreceptor triggering, LAT becomes multiply tyrosine-phosphorylated by Syk-, Src-, or Tec-family kinases, providing docking sites for downstream signaling molecules. LAT is essential for TCR-dependent T cell- and FcεpsilonRI-dependent mast cell activation, as well as for maturation of early thymocytes. It is also involved in NK cell signaling and platelet activation.

Product Info

Amount :	0.1 mg
Purification :	Purified by protein-A affinity chromatography
Storage condition :	Store at 2-8°C. Do not freeze.

Application Note

Immunoprecipitation: Tyrosine-phosphorylated form of LAT is not optimally recognized.

Flow cytometry: Intracellular staining. Tyrosine-phosphorylated form of LAT is not optimally recognized.

Western blotting: Recommended dilution: 1-2 µg/ml.

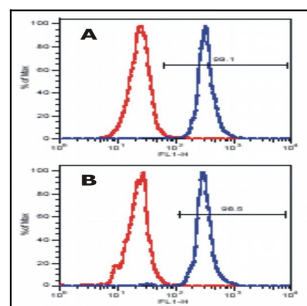


Figure 1: Flow Cytometry analysis of LAT expression in peripheral blood lymphocytes using anti-human LAT (LAT-01) (surface markers were stained prior to intracellular staining of human LAT). Panel A: gate on CD4+ cells, Panel B: gate on CD8+ cells