

30-1273: Anti-LIME Monoclonal Antibody (Clone:LIME-06)

| | |
|--------------------------------|---|
| Clonality : | Monoclonal |
| Clone Name : | LIME-06 |
| Application : | IP |
| Reactivity : | Human |
| Gene : | LIME1 |
| Gene ID : | 54923 |
| Uniprot ID : | Q9H400 |
| Format : | Purified |
| Alternative Name : | LIME1,LIME,LP8067 |
| Isotype : | Mouse IgG1 |
| Immunogen Information : | Bacterially expressed intracellular fragment corresponding to aa 141-295 of human LIME. |

Description

LIME (Lck-interacting molecule) is a 30 kDa double-palmitoylated protein with unusually basic cytoplasmic domain, expressed by T cells. After ligation of CD4 or CD8 T cell coreceptors, LIME is phosphorylated by Src-family kinases and associates with Lck and Fyn kinases and with their negative regulator Csk. Interestingly, Csk-mediated phosphorylation of C-terminal negative-regulatory tyrosine of LIME-associated Lck can result in increase of enzymatic activity compared with the total pool of Lck, thus, LIME serves as a positive regulator of TCR-dependent T cell signaling. However, under some circumstances, LIME may mediate inhibitory signals.

Product Info

| | |
|----------------------------|---|
| Amount : | 0.1 mg |
| Purification : | Purified by protein-A affinity chromatography |
| Storage condition : | Store at 2-8°C. Do not freeze. |

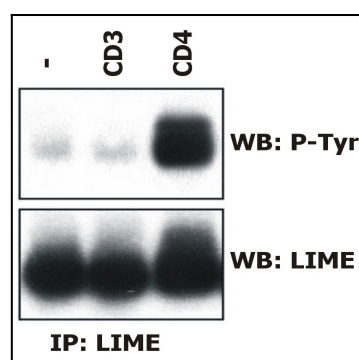


Figure 1: Induction of LIME tyrosine phosphorylation. Peripheral blood T cells were left unstimulated (-) or stimulated with anti-human CD3 (MEM-92;)