

30-1274: Anti-LIME Monoclonal Antibody (Clone:LIME-10)

| | |
|--------------------------------|--|
| Clonality : | Monoclonal |
| Clone Name : | LIME-10 |
| Application : | WB, IHC |
| Reactivity : | Human |
| Gene : | LIME1 |
| Gene ID : | 54923 |
| Uniprot ID : | Q9H400 |
| Format : | Purified |
| Alternative Name : | LIME1,LIME,LP8067 |
| Isotype : | Mouse IgG2a |
| Immunogen Information : | COOH-terminal peptide comprising residues 281-296 of the human LIME conjugated to keyhole limpet hemocyanin. |

Description

LIME (Lck-interacting molecule) is a 30 kDa double-palmitoylated protein with unusually basic cytoplasmic domain, expressed by T cells. After ligation of CD4 or CD8 T cell coreceptors, LIME is phosphorylated by Src-family kinases and associates with Lck and Fyn kinases and with their negative regulator Csk. Interestingly, Csk-mediated phosphorylation of C-terminal negative-regulatory tyrosine of LIME-associated Lck can result in increase of enzymatic activity compared with the total pool of Lck, thus, LIME serves as a positive regulator of TCR-dependent T cell signaling. However, under some circumstances, LIME may mediate inhibitory signals.

Product Info

| | |
|----------------------------|---|
| Amount : | 0.1 mg |
| Purification : | Purified by protein-A affinity chromatography |
| Storage condition : | Store at 2-8°C. Do not freeze. |

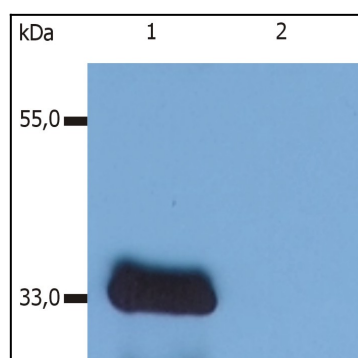


Figure 1: Western Blotting analysis (reducing conditions) of human LIME using anti-human LIME (LIME-10). Lane 1: J77 cell line transfected with LIME. Lane 2: non-transfected J77 cell line (cells are essentially devoid of endogenous LIME expression)