

30-1281: Anti-LIME Polyclonal Antibody

Clonality :	Polyclonal
Application :	WB, IHC
Reactivity :	Human
Gene :	LIME1
Gene ID :	54923
Uniprot ID :	Q9H400
Format :	Purified
Alternative Name :	LIME1,LIME,LP8067
Isotype :	Rabbit IgG
Immunogen Information :	Bacterially expressed intracellular fragment corresponding to aa 141-295 of human LIME.

Description

LIME (Lck-interacting molecule) is a 30 kDa double-palmitoylated protein with unusually basic cytoplasmic domain, expressed by T cells. After ligation of CD4 or CD8 T cell coreceptors, LIME is phosphorylated by Src-family kinases and associates with Lck and Fyn kinases and with their negative regulator Csk. Interestingly, Csk-mediated phosphorylation of C-terminal negative-regulatory tyrosine of LIME-associated Lck can result in increase of enzymatic activity compared with the total pool of Lck, thus, LIME serves as a positive regulator of TCR-dependent T cell signaling. However, under some circumstances, LIME may mediate inhibitory signals.

Product Info

Amount :	0.1 mg
Purification :	Purified from rabbit serum by precipitation methods
Storage condition :	Store at 2-8°C. Do not freeze.

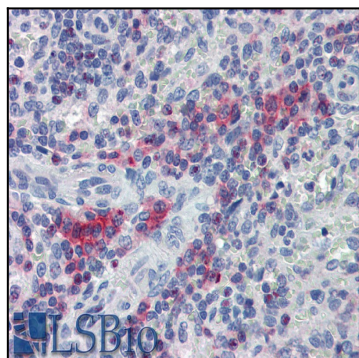


Figure 1: Immunohistochemistry staining of human spleen (paraffin sections) with anti-LIME polyclonal antibody.